



TANFORAN MEMORIAL

Assembly Center Committee

P.O. Box 5285

Richmond, CA 94805

"Those who cannot remember the past are condemned to repeat it." – George Santayana

When President Roosevelt signed E.O. 9066 on February 19th, 1942, it put in motion the removal of 120,000 persons of Japanese ancestry to concentration camps in remote areas of the United States. During the building of the camps, temporary detention centers were constructed to hold the internees. Tanforan Racetrack, in San Bruno, California, was one of those detention camps.

From April to October of 1942, Tanforan Assembly Center housed 8,000 persons of Japanese ancestry who were imprisoned in hastily built barracks and, in some cases, in whitewashed horse stalls that reeked of manure and urine.

The Tanforan Assembly Center Memorial Committee has been working to create a memorial in the plaza between the San Bruno Bay Area Rapid Transit (BART) station and The Shops at Tanforan. The memorial will honor the internees and educate those who are not aware of the history of the incarceration.

The proposed memorial is envisioned to include:

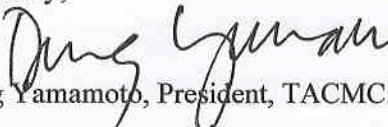
- A bronze statue of two young girls waiting to be removed to the Tanforan Assembly Center, inspired by a photo taken by Dorothea Lange in 1942
- A wall inscribed with the names of those 8,000 who were imprisoned at Tanforan
- Interpretive storyboard panels citing the relevant events of the time
- Inscribed donor pavers
- Symbolic Japanese maple and cherry trees to provide a welcoming plaza environment

This project has received enthusiastic support from:

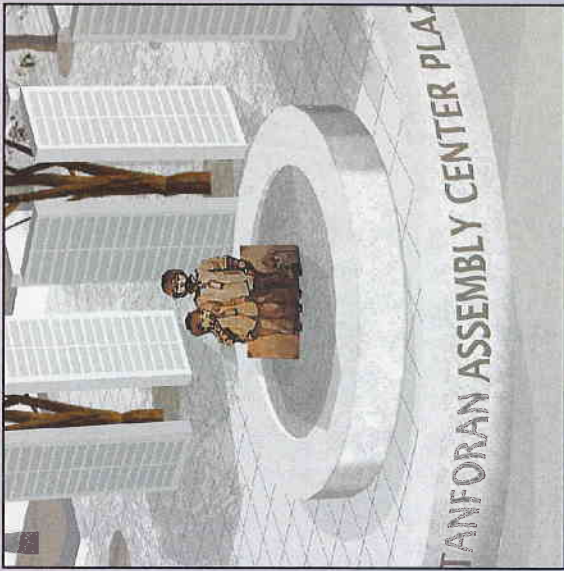
- BART Board of Directors and General Manager Grace Crunican, including approval to place the memorial in the BART plaza
- U.S. Congresswoman Jackie Speier
- California State Senator Jerry Hill
- California State Assembly members Kevin Mullin and Rich Gordon
- San Mateo County Board of Supervisors member Dave Pine, whose office has committed substantial funding for the project
- San Bruno City Council and Mayor Jim Ruane
- National, District and local chapters of the Japanese American Citizens League (JACL)

Our Committee has submitted a grant proposal to the National Park Service, which is currently under review. But completion of the project will require donations from individual supporters like you. Please consider a generous donation to honor a family member or friend who was incarcerated at Tanforan, and as a reminder to all of America that this can never happen again.

Sincerely,


Doug Yamamoto, President, TACMC


Steve Okamoto, Vice President, TACMC



Our vision for this memorial is to recognize and honor the individual stories as part of the fabric of Japanese American history. These stories deserve to be told and remembered by all Americans. Please consider a generous donation, possibly in honor of, or in memory of, members of your family. Perhaps your family can make a group donation or your employer can also do a matching donation. Each name and each story is important and we plan on listing on a wall the names of the 8,033 internees held at Tanforan as part of the Tanforan Memorial.

Thank you,

Doug Yamamoto - Chairman
 Esther Takeuchi - Treasurer

Donations at any level will be gratefully accepted

For those who donate at these levels, donor recognition carved in stone pavers will be placed at the memorial.

- \$25,000 - 24"x12" - 5 lines
 20 characters per line - 1 inch font
- \$5,000 - 12"x12" - 5 lines
 9 characters per line - 1 inch font
- \$1,000 - 12"x6" - 2 lines
 12 characters per line - 3/4 inch font

I would like to donate to the photo display at BART San Bruno.

We are grateful for donations in any amount. Tanforan Assembly Center Memorial Committee is a California tax exempt 501(c)3 non-profit corporation.

Donations are tax deductible to the extent allowed by law.

Tax id #46-0952648.

Please mail your check to:

Tanforan Assembly Center
 Memorial Committee (TACMC)
 PO Box 5285
 Richmond, CA 94805

Email: tanforan.memorial@gmail.com
 Web: www.tanforanmemorial.org
 Facebook: Tanforan Memorial



TANFORAN ASSEMBLY CENTER MEMORIAL COMMITTEE



Artist's conception of Tanforan memorial
 in the San Bruno BART Plaza

**PO BOX 5285
 RICHMOND, CA 94805**

Dear Friends and Supporters,

The Dorothea Lange and Paul Kitagaki Jr. photo exhibit of the imprisonment of Japanese Americans during WWII has been on display for over two years at the San Bruno BART station. The San Bruno BART station is at the site of the Tanforan Assembly Center. Persons of Japanese ancestry were held there until American concentration camps were constructed in the interior deserts of the nation.

The Tanforan Assembly Center Memorial Committee has been leading the effort to develop a memorial on the site. Several exciting events have taken place this past year:

- A National Park Service Japanese American Confinement Sites Program grant was awarded to develop a traveling photo exhibit, including resources to print high quality photos for the permanent exhibit. This exhibit will also tour Bay Area Nikkei senior centers.

- An artist has been commissioned to create a bronze sculpture based on an iconic image of one of Dorothea Lange's 1942 documentary photos of the forced round-up of the Bay Area Japanese Americans.

Meeting our goal will memorialize the events that took place at Tanforan over

Japanese maple and cherry trees planted along site exterior and throughout tree wells

Historic reconstruction of Tanforan horse stalls

"They Wore Their Best" Photo exhibition

Internees' names

New paving stones

Tanforan map

Benches

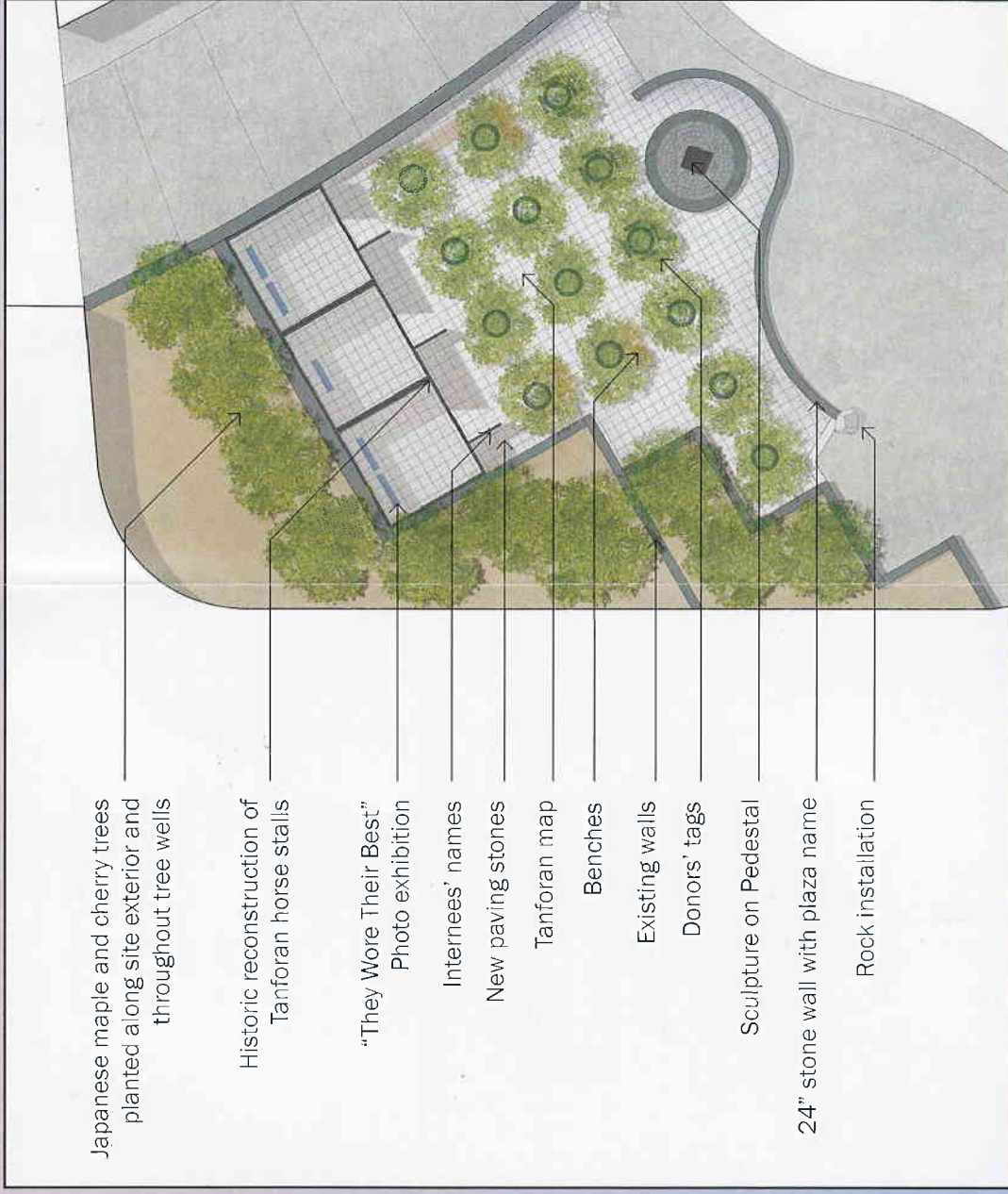
Existing walls

Donors' tags

Sculpture on Pedestal

24" stone wall with plaza name

Rock installation



70 years ago. This memorial will ensure that this tragic and illegal action in US history will never be forgotten. Through this memorial we will be able to tell the story of our ancestors' perseverance to all who see it. We cannot allow this important American story to be forgotten. We want to complete this memorial while the remaining survivors who were young adults or children in Tanforan are still

alive to see their story memorialized. Another reason to support the Tanforan memorial is its location. The San Bruno BART station is easily accessible to people in the San Francisco Bay Area. Families, organizations, and student groups can take BART directly to the site to learn about this event. Other memorial sites are a long way from urban areas.